

# Stallan-Brand

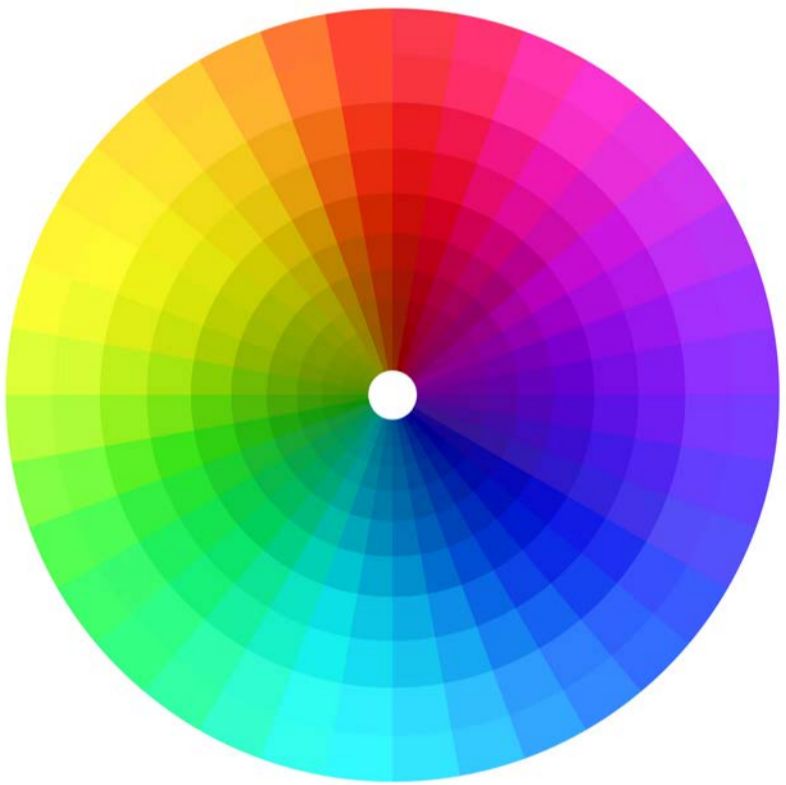
South Lanarkshire Schools Modernisation

---

## Primary Colours

Light, airy, confident and colourful learning environments

---



The following images represent the dynamic palette of colours used across a family of Primary Schools designed by Stallan-Brand.

The design concept, for each Primary School was to create a stimulating vibrant and rich environment where the use of colour was carefully considered. Between interior concepts, wayfinding graphics and legible architecture each school takes on a different identity and brand whilst still being related.

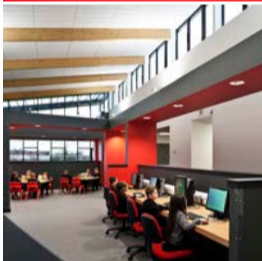
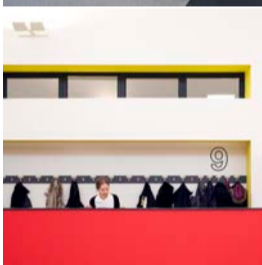
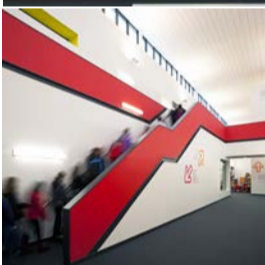
Stallan-Brand have managed to deliver each school on super tight budgets yet champion a design led approach that exploits every opportunity to innovate especially when design inputs have a zero or minimum cost like a 'tin of paint'.

Stallan-Brand have created an architectural design product that relies on a strict regime of construction details and a limited palette of materials which rather than being restrictive has been liberating and the source of invention.

These South Lanarkshire Schools in Scotland are light, airy, confident and colourful helping reaffirm education at the heart of the community.



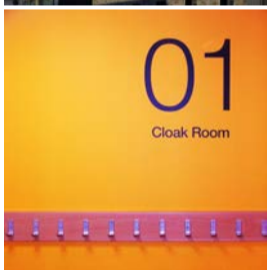
The amazing power and importance of colour on children and its ability to enhance and strengthen their experience of the learning environment should not be underestimated. We consciously select colours which enhance the health, morale, emotions, behaviour, and performance of children.



"Red used as a highlight is a great colour to enliven spaces with the same energetic spirit as the children."



Colour can be a wonderful environmental enhancement for improving children's enthusiasm, attention and interest whilst at school, as well as improving staff moral and efficiency; resulting in an overall improvement in productivity within the classroom. The mental stimulation passively received by the colour in and around the school, helps both the children and teachers stay focused on the task at hand.



"Orange is a vibrant and energetic colour it commands attention without being as overpowering as red. As a friendly and inviting colour it is a good fit for the ethos of many schools."



Eye strain is one other area that can affect children and teachers during daily lessons and one way of reducing such strain is through the introduction of colour within the architectural environment to help the eye relax.



“Yellow lends a sense of happiness and cheerfulness, as a contrast to even the greyest Scottish weather”



Children were also found to turn inward in monotone environments, which may create the feelings of loneliness, anxiety, fear and distress resulting from under stimulation.



“Many South Lanarkshire Schools sit in rural settings. Picking colours from the natural world allows us to bring the landscape into the architecture.”



Ultimately, Stellan-Brand consider that the use of colour within schools is, as important, if not more so that the architectural forms themselves, offering both psychological and stress-reducing benefits to the children and staff alike.



“Head teachers as the custodians of the school have often helped inform our colour choices by their requirement for the school environment to reflect a feeling of calm and responsibility on the children.

In these schools deeper blues have been used as the accent colour to represent calmness and responsibility. With brighter blues to keep spaces feeling energized and refreshing.”



Young children find high contrast and bright colours more stimulating and mood enhancing. Older children and those with learning impairments prefer the cooler colours and more subdued hues provide enough stimulation to them without proving distracting or stress-inducing.



“Purple has long been associated with creativity and imagination. Making it an appropriate colour choice for schools that accommodate children with varied behavioural needs.”



The incorporation of black and grey shades allows not only for a modern and simple interior but for a low maintenance interior that avoids signs of wear and tear. Black can be either conservative or modern, traditional or unconventional, depending on the colours it's combined with, this flexibility has meant shades of black have been used throughout Stallan-Brand schools.



“Similar to the large volume of white used throughout the schools black is used as a neutral to create a strong contrast against the highlight colours.”



We hope our school projects are singularly impressive, however what we have sought to achieve is a consistent high standard of design across each project as a result of the knowledge transfer and investment made and shared from school project to school project.

South Lanarkshire Councils procurement framework has allowed our whole multi-disciplinary team to learn and improve and deliver genuine value to local communities whilst working on limited budgets.

From our approach to the consultation process with pupils, teachers, parents and the community through to even designing the school website and new school uniforms we can evidence not just colourful new schools but deep rooted transformational regeneration.



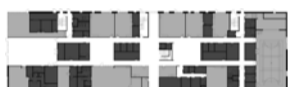
St Joseph's Primary School



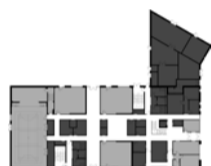
St. Charles' Primary School



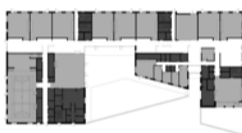
Park View Primary School



Maxwellton Primary and Greenburn School



Woodhead Primary School



East Milton Primary School



Auchinraith Primary School



Cairns Primary School



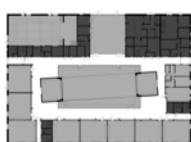
Hunter Primary School



St. Cadoc's Primary School



St. Bride's Primary School



Long Calderwood Primary School

We believe excellent school designs can better support teachers deliver a dynamic curriculum that prioritises not only a pupils core skills in literacy and numeracy but also assists in the development of a young persons essential interpersonal social skills, self confidence and knowledge. In this respect we are interested in designing learning environment where pupils can 'learn to learn'.

